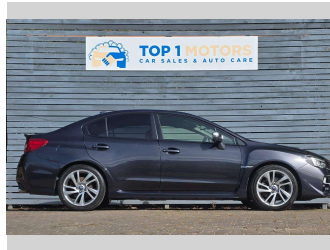



2016 Subaru WRX S4




Purchase Price **\$17,950**
Includes GST, Registration & Licensing

Finance may be available on this vehicle. Ask one of our friendly staff for more information.



Gain peace of mind with Mechanical Breakdown Insurance. **Ask us how.**



Top features

- » ABS brakes
- » Air Conditioning
- » Alloy wheels
- » Body Kit (Aero)
- » Car Alarm
- » Central locking
- » Central Locking
- » Child seat anchor poin...
- » Cruise Control
- » Driver airbag
- » Electric Mirrors
- » Fog Lights
- » Passenger airbag
- » Power steering
- » Rear Wiper
- » Rearwiwe camera
- » Spoiler
- » Spot Lights

Body Style
Saloon

Odometer
128,162 km

Engine
1998 cc


Fuel Type
Petrol

Transmission
CVT

Wheels
-

VIN
7AT0GF20X23014118

Interior
Black, Leather

Safety

Based on 2024 VSRR rating

Reg No.
RLE65

Ext Colour
Grey

History
-

Seats
Leather

CO2 Emissions
★ ★ ★ ★ ☆ ☆ ☆
195 grams/km

Energy Economy
★ ★ ☆ ☆ ☆ ☆ ☆
Annual fuel cost of \$3,290
8.4L per 100km

Cost per year is an estimate based on petrol price of \$2.80 per litre and an average distance of 14000 km. Emissions and Energy Economy figures standardised to 3P WLTP.

Stock ID: 809



Top 1 Motors | Phone 03 477 1188 | Email top1dunedin@gmail.com
115 Kaikorai Valley Road, Glenross, Dunedin 9011, New Zealand
www.top1motors.co.nz