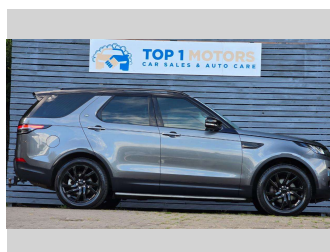



2018 Land Rover DISCOVERY TD6 S 3.0DT/4WD/8AT




Purchase Price **\$29,999**
Includes GST, Registration & Licensing

Finance may be available on this vehicle. Ask one of our friendly staff for more information.



Gain peace of mind with Mechanical Breakdown Insurance. **Ask us how.**



Top features

- » ABS brakes
- » Air Conditioning
- » Alarm
- » Alloy wheels
- » Car Alarm
- » CD PLAYER
- » Central locking
- » Central Locking
- » Child seat anchor poin...
- » Cruise Control
- » Driver airbag
- » Electric Mirrors
- » Electric Mirrors (Retr...
- » Heated Seats
- » Parking Sensors
- » Passenger airbag
- » Power steering
- » Rear Wiper

Body Style
Station Wagon

Odometer
232,474 km

Engine
2993 cc, turbo

Fuel Type
Diesel

Transmission
8 Speed Auto

Wheels
-

VIN
SALRA2AK8JA074481

Interior
Black, Cloth

Safety



Based on 2025 VSRR rating

Reg No.
LNW52

Ext Colour
Grey

History
-

Seats
CLOTH

CO2 Emissions
★ ★ ★ ☆ ☆ ☆
225 grams/km

Energy Economy
★ ★ ☆ ☆ ☆ ☆

Annual fuel cost of \$3,470
8.6L per 100km

Cost per year is an estimate based on diesel price of \$2.00 per litre and an average distance of 14000 km. Includes Road User Charges (RUC). Emissions and Energy Economy figures standardised to 3P WLTP.

Stock ID: 849



Top 1 Motors | Phone 03 477 1188 | Email top1dunedin@gmail.com
115 Kaikorai Valley Road, Glenross, Dunedin 9011, New Zealand
www.top1motors.co.nz