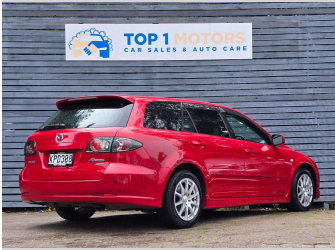


2006 Mazda Atenza 2.3S 4WD



Purchase Price

\$8,500

Includes GST, Registration & Licensing

Finance may be available on this vehicle. Ask one of our friendly staff for more information.



Gain peace of mind with Mechanical Breakdown Insurance. **Ask us how.**



Top features

- » 16 Valve
- » ABS brakes
- » Air Conditioning
- » Alloy wheels
- » CD PLAYER
- » Central locking
- » Central Locking
- » Child seat anchor poin...
- » Driver airbag
- » Electric Mirrors
- » Face Lift Model
- » Fog Lights
- » Passenger airbag
- » Power steering
- » Rear Wiper
- » Spoiler
- » Spot Lights

Body Style

Station Wagon

Odometer

126,098 km

Engine

2260 cc

Fuel Type

Petrol

Transmission

Automatic

Wheels

-

VIN

7AT0C139X17507241

Interior

Black, Cloth

Safety



Based on 2024 UCSR rating for 02-07 models

Reg No.

KPD308

Ext Colour

Red

History

-

Seats

Cloth

CO2 Emissions

★☆☆☆☆

264 grams/km

Energy Economy

★☆☆☆☆

**Annual fuel cost of \$4,310
11L per 100km**

Cost per year is an estimate based on petrol price of \$2.80 per litre and an average distance of 14000 km. Emissions and Energy Economy figures standardised to 3P WLTP.

Stock ID: 731



Top 1 Motors | Phone 03 477 1188 | Email top1dunedin@gmail.com
115 Kaikorai Valley Road, Glenross, Dunedin 9011, New Zealand
www.top1motors.co.nz