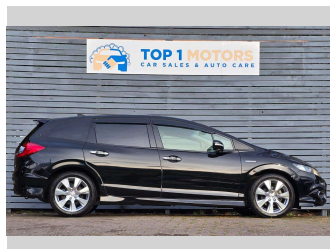


2015 Honda Jade Petrol Hybrid



Purchase Price

\$13,999

Includes GST, Registration & Licensing

Finance may be available on this vehicle. Ask one of our friendly staff for more information.



Gain peace of mind with Mechanical Breakdown Insurance. **Ask us how.**



Top features

- » 16 Valve
- » ABS Braking
- » Air Conditioning
- » Alarm
- » Alloy wheels
- » CD PLAYER
- » Central locking
- » Central Locking
- » Child seat anchor poin...
- » Digital Display
- » Driver airbag
- » Fog Lights
- » Passenger airbag
- » Power steering
- » Rearviwe camera

Body Style

Station Wagon

Odometer

83,584 km

Engine

1496 cc, Petrol Hybrid

Fuel Type

Petrol

Transmission

CVT

Wheels

-

VIN

7AT08G9GX24003927

Interior

Black, Cloth

Safety



Based on 2024 VSRR rating

Reg No.

QQP509

Ext Colour

Black

History

-

Seats

Cloth

CO2 Emissions

★★★★★☆☆

118 grams/km

Energy Economy

★★★★☆☆☆☆

**Annual fuel cost of \$1,960
5L per 100km**

Cost per year is an estimate based on petrol price of \$2.80 per litre and an average distance of 14000 km. Emissions and Energy Economy figures standardised to 3P WLTP.

Stock ID: 763



Top 1 Motors | Phone 03 477 1188 | Email top1dunedin@gmail.com
115 Kaikorai Valley Road, Glenross, Dunedin 9011, New Zealand
www.top1motors.co.nz